

ISGB、IRGB series

Detachable Pipeline Centrifugal Pumps



SHANGHAI ZHILI PUMP MFR CO.,LTD

Product Introduction

Besed on IS and ISG vertical pumps, ISGB、IRGB series detachable pipeline centrifugal pumps are detachable vertical centrifugal pumps provided with original structure and leading technology. Embodying advanced imported technology, years of production practice and valuable experience of the mass users, they are superior to other products of the same kind. This series of products are proven qualified in all indexes according to the inspection carried out by national pumps testing center, zhejiang branch. Designed and manufactured strictly to ISO2825, they fill a void at home, with their all around protecties matching the leading level of the similar products in the international.

This series of products are integrally designed with breakthrough ideas. The pump shaft is given independent bearing, which is a solution to the deficiency of the former ISG and ISW pumps, whose extended shaft is supported by motor to eliminate the axial and pump body are designed and manufactured with the most up-to-date hydraulic model to eliminate the axial and radial forces of vertical pump, making both the bearings at pump shaft and motor only bearing slight axial and radial forces. Y and Y2 standard general motors are used in this series. The whole pump is provide with a detachable structure, which is away from the problem of difficulty in replacing the wearing parts of high-powered pumps, such as bearing, mechanical seal. Impeller and etc.

Compared with other products of its kind at home, this series of pumps are given irreplaceable advantages, like smooth running, long service life, easily configured, self-circulation cleaning system, ease of maintenance and etc. making them an optimal choice to replace the conventional centrifugal pumps of ISG, IS and S models.

Definition

For example: ISGB150-50(I)A

ISGB-standard detachable centrifugal pump

IRGB- standard detachable hot water centrifugal pump

150-Diameters of suction and discharge nozzles of pump (mm)

50-pump rated head (m)

(I) – pump flow classification

A- Impeller processed with primary cutting

Main purpose

Applied as the transportation of non-corrosive cold and hot water in these fields of air-cordition, heat circulation, non-polluted water, water treatment, cooling & freezing systems, liquid cycle, water supply, increasing pressure, irrigation and so on .

Working conditions

Rotating speed: 2960 r/min, 1480 r/min, 980 r/min

Medium: clean water or liquid with similar physical chemical features as clean water.

Medium temperature: -10°C - 80°C (ordinary temperature pumps), $\leq 120^{\circ}\text{C}$ (hot water pumps)

Ambient temperature: up to 40°C

Range of capacity: 1.8 – 1900 m^3/h

Range of head: $\leq 135\text{m}$

Maximum working pressure: suction pressure + head of pump $\leq 1.6\text{Mpa}$

Maximun suction height

When use, the users should consider various factors that can affect the use, the max suction height should be less than the following calculated value (the liquid will flow backward when the calculated value is negative).

$$H = P_b \times 10.2 - (\text{NPSH})_r - \sum h - H_v - H_s$$

P_b : local atmosphere pressure bar

$(\text{NPSH})_r$: Net positive suction head m

$\sum h$: Loss of suction strengrh m

H_v : The pressure of saturation steam of liquid m

H_s : safety surplus m (minimum:0.5m)

Materials

Pump body: Cover and Impeller: cast iron, cast steel and stainless steel

Shaft: 45 steel/stainless steel 3Cr13

Mechanical seal motive immobile ring:

Tangsten carbide, silicon carbide, harden alloy and so on.

Structure description

With compact structure, be applicable especially for modern construction.

Pump casing: it is a kind of pipes-joined spirai pump casing, adpot the best hydraulic model to design. The suction and discharge nozzle have the diameter or same dimension, and the centers of circle are in the same line.

Impeller: it is a kind of enclosed cast iron impeller, and its best hydraulic model guarantess the efficiency and reliability of pump.

Mechanical seal: it is free of mainfenance and free to rotation if used in the water below 80°C ou 120°C . The special design for dynamic ring can guarantee the reliability of seal.

Motor

Y、Y2 series: total closed self fan-cooled squirrel cage, a phase asynchronous motor.

Voltage: 380V

Frequency: 50Hz

Protection class: IP44/IP54

Installation class: B5/V1

Installation modes: B35

Notice: special motor can be ordered upon request.

Assembly advantages

Pump shaft and motor shaft are rigidly connected, completely concentric, with small vibration and low noise.

The inlet and outlet diameters are the same and on the same line, thereby, the pump, just like a valve, can be mounted at any position on the pipeline.

Pump shaft is provided with an independent bearing, so that motor bearing can work more dependably.

Use the method of compulsive circulation to improve the operating condition of mechanical seal, thus to lengthen its service life.

The structure of vertical installation can greatly lessen the occupation area of pump, saving construction investment by 40%~60%.

Perfect design to ensure leak-tightness and long-time operation, saving operation management cost by 50%~70%.

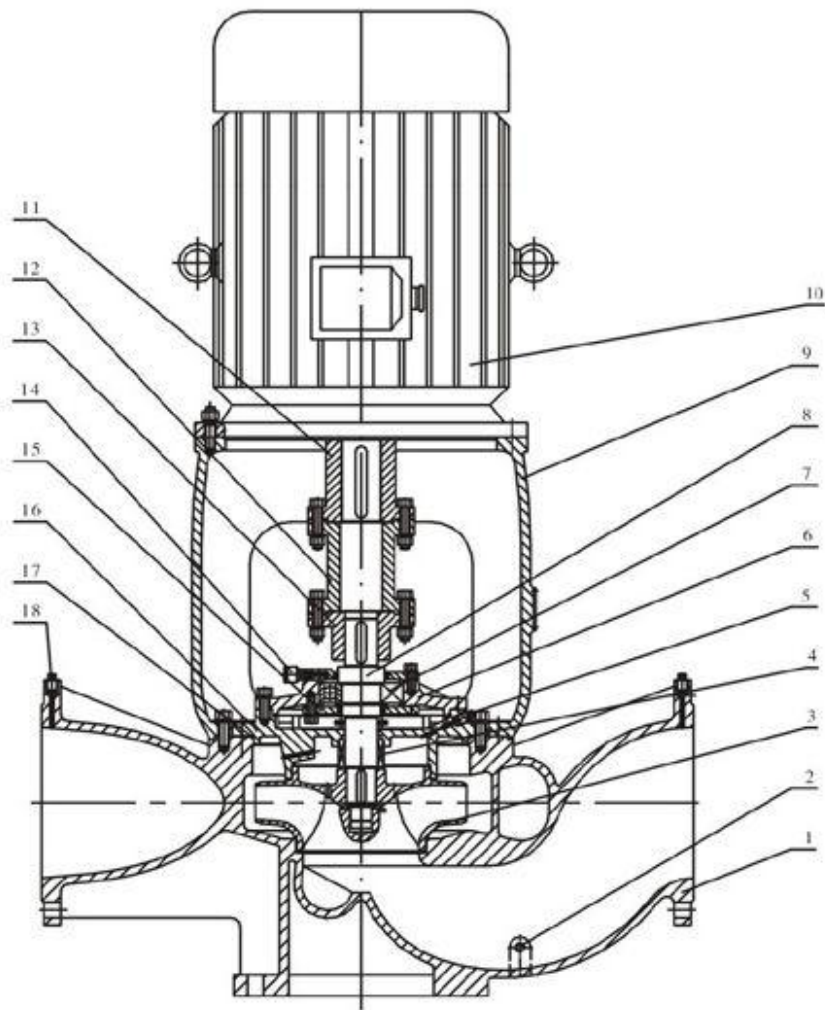
Use of quality casing, high dimensional accuracy and elegant outline.

Motor supplied by prestigious manufacturer at home and ensured of good quality.

This series is specially designed to make pump directly mounted on the pipeline.

Upon installation, except that the head of motor cannot be made downward, others can be installed in any direction.

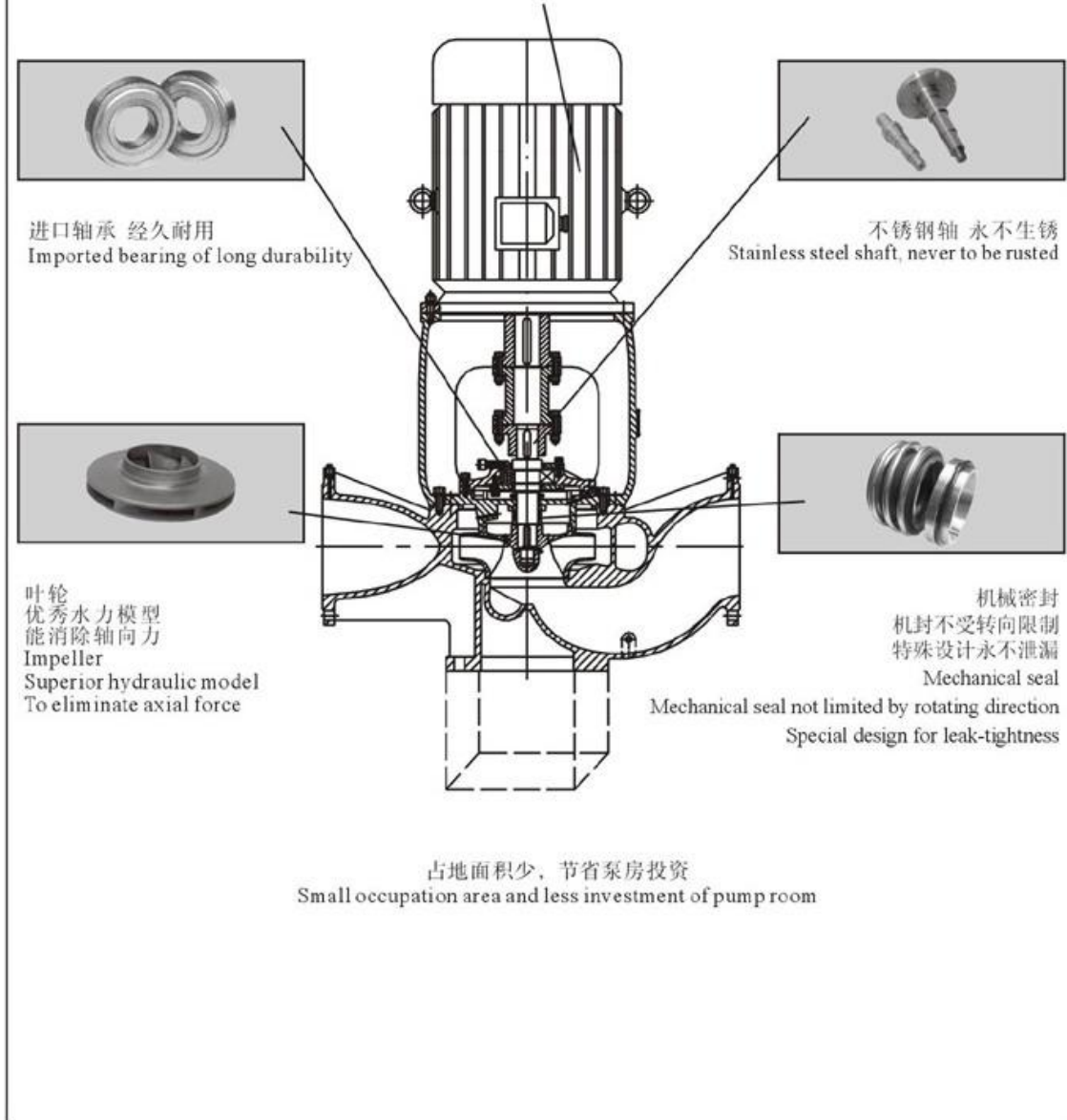
Structure Drawing



NO.	NAME	NO.	NAME
1	Pump body	10	Motor
2	Drain plug	11	Motor coupling
3	Impeller	12	Intermediate coupling
4	Mechanical seal	13	Pump coupling
5	Air discharge valve	14	Oil Cup
6	Bearing body	15	Bearing gland
7	Bearing	16	Pump cover
8	Pump shaft	17	Sealing gasket
9	Bracket	18	Pipe plug



Y.Y2 系列标准电机，配套方便
Y and Y2 series standard motors, easily configured



ISGB Performance Parameter Table

Type	Capacity		Head (m)	Efficiency (%)	Speed (r/min)	Motor Power (kg)	NPSH	Weight (kg)
	(m ³ /h)	(L/S)						
40-12.5	4.4	1.22	13.2	48	2960	0.55	2.3	40
	6.3	1.75	12.	54				

	8.3	2.31	5 11. 3	53				
40-12.5 A	3.9	1.08	10. 6	46	2960	0.37	2.3	40
	5.6	1.56	10	52				
	7.4	2.06	9	51				
40-20	4.4	1.22	13. 2	48	2960	0.55	2.3	40
	6.3	1.75	12. 5	54				
	8.3	2.31	11. 3	53				
40-20A	3.9	1.08	17. 6	40	2960	0.75	2.3	40
	5.6	1.56	16	45				
	7.4	2.06	14. 4	41				
40-32	4.4	1.22	21	41	2960	1.1	2.3	55
	6.3	1.75	20	46				
	8.3	2.31	18	43				
40-32A	3.8	1.06	25. 5	34	2960	1.1	2.3	50
	5.5	1.53	24	38				
	7.2	2	22. 5	37				
40-32B	4.1	1.14	29	34	2960	1.5	2.3	45
	5.9	1.64	28	39				
	7.8	2.17	26. 3	39				
40-50	4.4	1.22	33	35	2960	2.2	2.3	75
	6.3	1.75	32	40				
	8.3	2.31	30	42				
40-50A	4.1	1.14	45	26	2960	3	2.3	65
	5.9	1.64	44	31				
	7.8	2.17	42	30				
40-50B	3.7	1.03	38	24	2960	2.2	2.3	55
	5.3	1.47	36	29				
	7	1.94	34. 5	28				
40-80	4.4	1.22	82	24	2960	7.5	2.3	115
	6.3	1.75	80	29				
	8.3	2.31	74	28				

40-80A	4.1	1.14	45	26	2960	5.5	2.3	110
	5.9	1.64	44	31				
	7.8	2.17	42	30				
40-80B	3.8	1.06	61. 5	23	2960	5.5	2.3	110
	5.5	1.53	60	27				
	7.2	2	56	26				
50-12.5	8.8	2.44	13. 6	55	2960	1.1	2.3	45
	12.5	3.47	12. 5	62				
	16.3	4.53	11. 3	60				
50-12.5 A	8	2.22	11	53	2960	0.75	2.3	40
	11	3.06	10	60				
	14.5	4.03	9	58				
50-20	8.8	2.44	13. 6	55	2960	1.1	2.3	50
	12.5	3.47	12. 5	62				
	16.3	4.53	11. 3	60				
50-20A	8	2.22	17	48	2960	1.1	2.3	45
	11	3.06	16	57				
	14.5	4.03	14	56				
50-32	8.8	2.44	21. 5	49	2960	3	2.3	65
	12.5	3.47	20	58				
	16.3	4.53	17. 8	57				
50-32A	8.2	2.28	29	44	2960	2.2	2.3	50
	11.7	3.25	28	51				
	15.2	4.22	26	50				
50-32B	7.3	2.03	23	43	2960	1.5	2.3	50
	10.4	2.89	22	50				
	13.5	3.75	20. 5	50				
50-50	8.8	2.44	33	45	2960	5.5	2.3	110
	12.5	3.47	32	52				
	16.3	4.53	30	51				
50-50A	8.3	2.31	45. 8	37	2960	4	2.3	90
	11.7	3.25	44	45				

	15.3	4.25	42	45				
50-50B	7.5	2.08	40	36	2960	3	2.3	90
	10.6	2.94	38	44				
	13.8	3.83	35	44				
50-80	8.8	2.44	52	38	2960	11	2.3	165
	12.5	3.47	50	46				
	16.3	4.53	48	46				
50-80A	8.2	2.28	71. 5	29	2960	7.5	2.3	125
	11.6	3.22	70	38				
	15.2	4.22	68	41				
50-80B	7.6	2.11	61. 5	27.5	2960	7.5	2.3	125
	10.8	3	60	37				
	14	3.89	58	40				
50-80C	7.1	1.97	53. 2	27	2960	5.5	2.3	115
	10	2.78	52	36				
	13.1	3.64	50. 4	39				
65-12.5	17.5	4.86	82	39	2960	15	2.5	50
	25	6.94	80	50				
	32.5	9.03	76. 5	52				
65-12.5 A	15.6	4.33	11	65	2960	1.1	2.5	45
	22.3	6.19	10	67				
	29	8.06	8.4	68				
65-20	17.5	4.86	13. 7	67	2960	1.5	2.5	65
	25	6.94	12. 5	69				
	32.5	9.03	10. 5	69				
65-20A	15.6	4.33	17. 5	58	2960	2.2	2.5	55
	22.3	6.19	16	66				
	29	8.06	14. 4	65				
65-32	17.5	4.86	22	60	2960	3	2.5	80
	25	6.94	20	68				
	32.5	9.03	18	67				
65-32A	16.4	4.56	30	54	2960	4	2.5	80
	23.4	6.5	28	62				

	30.4	8.44	24. 5	59				
65-32B	15 21.6 28	4.17 6 7.78	26 24 21	51 61 61	2960	3	2.5	70
65-50	17.5 25 32.5	4.86 6.94 9.03	34. 4 32 27	54 63 60	2960	4	2.5	120
65-50B	15.2 21.8 28.3	4.22 6.06 7.86	40. 5 38 34	48 58 59	2960	5.5	2.5	105
65-50A	16.4 23.5 30.5	4.56 6.53 8.47	46. 4 44 40	50 60 60	2960	5.5	2.5	115
65-80	17.5 25 32.5	4.86 6.94 9.03	52. 7 50 45. 5	50 62 61	2960	7.5	2.5	190
65-80A	16.4 23.4 30.5	4.56 6.5 8.47	71. 5 70 67	39 50 52	2960	11	2.5	175
65-85B	15 21.6 28	4.17 6 7.78	61 60 58	38 50 54	2960	11	2.5	175
65-125	17.5 25 32.5	4.86 6.94 9.03	82 80 76. 5	39 50 52	2960	15	2.5	325
65-125A	16.6 23.7 31	4.61 6.58 8.61	115 113 110	32 40 44	2960	22	2.5	265
65-125B	15.7 22.5 29.2	4.36 6.25 8.11	103 101 98	31 39 43	2960	18.5	2.5	230
65-125C	14.4 20.6 26.8	4 5.72 7.44	86 85 83	30 38 42	2960	15	2.5	215

Type	Capacity		Head (m)	Efficiency (%)	Speed (r/min)	Motor Power (kg)	NPSH	Weight (kg)
	(m ³ /h)	(L/S)						
80-12.5	35	9.72	128	43	2960	37	3	70
	50	12.89	125	54				
	65	18.06	122	57				
80-12.5A	31.3	8.69	11	66	2960	2.2	3	65
	44.7	12.42	10	72				
	58	16.11	8	69				
80-20	35	9.72	13.8	67	2960	3	3	105
	50	13.89	12.5	73				
	65	18.06	10	70				
80-20A	31.3	8.69	17.5	66	2960	4	3	85
	45	12.5	16	71				
	58	16.11	13.6	69				
80-32	35	9.72	22	67	2960	5.5	3	110
	50	13.89	20	72.5				
	65	18.06	17	70				
80-32B	30	8.33	27	61	2960	5.5	3	105
	43.3	12.03	24	69				
	56.3	15.64	20	68				
80-32A	32.7	9.08	30.6	62	2960	7.5	3	110
	46.7	12.97	28	70				
	61	16.94	25	69				
80-50	35	9.72	35	63	2960	7.5	3	180
	50	13.89	32	71				
	65	18.06	28	70				
80-50B	30.5	8.47	40.6	53	2960	7.5	3	125
	43.5	12.08	38	65				
	56.5	15.69	33.4	67				
80-50A	32.8	9.11	47	54	2960	11	3	175
	47	13.06	44	66				
	61	16.94	40	67				
80-80	35	9.72	53.3	55	2960	15	3	245
	50	13.89	50	67				
	65	18.06	46	68				
80-80B	30	8.33	63	51	2960	15	3	195
	50	12.03	60	58				
	65	15.56	54	59				
80-80A	32.5	9.03	73	52	2960	18.5	3	215
	46.7	12.97	70	59				
	61	16.94	64	60				

80-125	35 50 65	9.72 13.89 18.06	83 80 72	52 60 62	2960	37	3	365
80-125A	32.5 46.5 60.5	9.03 12.92 16.81	116 113 110	42 53 56	2960	30	3	350
80-125B	31 44.5 58	8.61 12.36 16.11	103 101 97	42 53 56	2960	30	3	345
80-125C	29 41 53.6	8.06 11.39 14.89	98 85 83	40 41 54	2960	22	3	280
100-12.5	70 100 130	19.4 27.8 36.1	132 125 114	55 66 67	2960	75	4	170
100-12.5A	62.6 89 116	17.39 24.72 32.22	11 10 8.8	64 74 74	2960	4	4.5	160
100-20	70 100 130	19.44 27.78 36.11	13.6 12.5 11	66 76 75	2960	5.5	4.5	190
100-20A	63.6 89 116	17.67 24.72 32.22	19 16 11	68 74 63	2960	7.5	4.5	175
100-32	70 100 130	19.44 27.78 36.11	23.5 20 14	70 76 65	2960	11	4.5	280
100-32B	60.6 86.6 112.5	16.83 24.06 31.25	27 24 18	66 72 65	2960	11	4.5	280
100-32A	65.4 93.5 121.6	18.17 25.97 33.78	32 28 21	68 74 67	2960	11	4.5	280
100-50	70 100 130	19.44 27.78 36.11	36.5 32 24	70 76 65	2960	15	4.5	250
100-50B	61 87 113	16.9 24.2 31.4	41 38 34	63 72 71	2960	15	4	200
100-50A	65.4 93.5 121.6	18.2 26 33.8	47.5 44 39	64 73 72	2960	18.5	4	220
100-80	70	19.4	54	65	2960	22	4	350

	100	27.8	50	74				
	130	36.1	42	73				
100-80B	61	16.9	65	60	2960	30	4	335
	87	24.2	60	67				
	113	31.4	51	66				
100-80A	65.4	18.2	76	61	2960	30	4	335
	93.5	26	70	68				
	121.6	33.8	59.5	67				
100-125	70	19.4	87	62	2960	37	4	690
	100	27.8	80	69				
	130	36.1	68	68				
100-125A	65.5	18.5	119	55	2960	55	4	555
	95	26.4	113	66				
	123.6	34.3	104	67				
100-125B	63	17.5	106.6	54	2960	45	4	445
	90	25	101	65				
	117	32.5	92	66				
100-125C	58	16.1	90	52	2960	37	4	390
	82	22.8	85	63				
	107	29.7	76	64				
125-12.5	96	26.7	13	78	2960	11	4	185
	160	44.4	12.5	82				
	192	53.3	12	84				
125-12.5A	86	23.9	18	73	2960	11	4	135
	143	39.7	16	77				
	172	47.8	13.6	79				
125-20	96	26.7	22.6	76	2960	15	4	230
	160	44.4	20	80				
	192	53.3	17	82				
125-20A	86	23.9	18	73	2960	11	4	215
	143	39.7	16	77				
	172	47.8	13.6	79				
125-32	96	26.7	36	72	2960	22	4	270
	160	44.4	32	78				
	192	53.3	28	79				
1325-32A	90	25	31.5	71	2960	18.5	4	235
	150	41.7	28	76				
	180	50	24.5	78				
125-32B	83	23.1	27	70	2960	15	4	220
	138	38.3	24	73				
	166	46.1	21	75				
125-50	90	25	48.4	71	2960	30	2	405
	150	41.7	44	76				

	180	50	40.5	78				
125-50A	96	26.7	55	72	2960	37	5	385
	160	44.4	50	77				
	192	53.3	46	78				
125-50B	83	23.1	41.3	70	2960	22	5	330
	138	38.3	37.5	75				
	166	46.1	34.5	77				
125-80	96	26.7	87	71	2960	45	4.5	580
	160	44.4	80	75				
	192	53.3	73	77				
125-80A	90	25	76	70	2960	45	4.5	500
	150	41.7	70	74				
	180	50	64	76				
125-80B	83	23.1	65	69	2960	37	4.5	435
	138	38.3	60	73				
	166	46.1	55	75				
125-125	96	26.7	133	69	2960	90	4.5	800
	160	44.4	125	72				
	192	53.3	119	68				
125-125A	90	25	117	65	2960	75	4.5	715
	150	41.7	110	70				
	180	50	104.6	67				
125-125B	86	23.9	140	68	2960	75	4.5	710
	143	39.7	135	73				
	172	47.8	125	73				
125-125C	80.5	22.4	96	64	2960	55	4.5	590
	134	37.2	88	68				
	161	44.7	86	65				
125-32(I)	120	33.3	35	64	2960	30	4.5	330
	200	55.6	32	76				
	240	66.7	28	75				
125-32(I)A	104	28.9	41	61	2960	30	4.5	300
	173	48.1	37	72				
	208	57.8	34.5	73				
125-32(I)B	112	31.1	48.4	62	2960	37	4.5	285
	187	51.9	44	73				
	224	62.2	40	73				
125-50(I)	120	33.3	55	63	2960	45	4.5	445
	200	55.6	50	74				
	240	66.7	46	73				
125-50(I)A	112	31.1	76	64	2960	55	4.2	425
	187	51.9	70	75				
	224	62.2	63	75				

125-50 (I)B	104	28.9	65	63	2960	45	4.2	415
	173	48.1	50	74				
	208	57.8	54	72				
125-80 (I)	120	33.3	87	65	2960	75	4.2	690
	200	55.6	80	76				
	240	66.7	72	74				
125-80 (I)A	112	31.1	116	57	2960	90	4.5	550
	187	51.9	110	72				
	224	62.2	105	74				
125-80 (I)B	104	28.9	100	55	2960	75	4.5	465
	173	48.1	95	70				
	208	57.8	91	72				
125-125 (I)	120	33.3	133	58	2960	110	4.5	960
	200	55.6	125	73				
	240	66.7	120	75				
125-125 (I)A	112	31.1	13.5	60	2960	90	4.5	790
	160	44.4	12.5	72				
	208	57.8	10	66				
125-125 (I)B	104	28.9	100	55	2960	75	4.5	755
	173	48.1	95	70				
	208	57.8	91	72				
150-12.5	112	31.1	13.5	60	1480	11	3.5	210
	160	44.4	12.5	72				
	208	57.8	10	66				
150-12.5A	98	27.2	19	65	1480	11	3.5	190
	140	38.9	17	70				
	182	50.6	11	66				
150-20	112	31.1	23.5	66	1480	15	3.5	260
	160	44.4	20	71				
	208	57.8	14	66				
150-20B	84	23.3	25	66	1480	15	3.5	210
	120	33.3	24	71				
	156	43.3	22.5	70				
150-20A	98	27.2	29	60	1480	18.5	3.5	240
	140	38.9	28	71				
	182	50.6	26.6	80				
150-32	112	31.1	33	62	1480	22	3.5	290
	160	44.4	32	70				
	208	57.8	28	80				
150-32B	84	23.3	41	66	1480	22	3.5	255
	120	33.3	38	70				
	156	43.3	30	73				
150-32A	98	27.2	46	60	1480	30	3.5	280

	140	38.9	44	70				
	182	50.6	39	80				
150-50	112	31.1	52	60	1480	37	4	520
	160	44.4	50	72				
	208	57.8	42	80				
150-50A	98	27.2	46	60	1480	30	4	500
	140	38.9	44	70				
	182	50.6	39	80				
150-50B	84	23.3	41	66	1480	22	4	480
	120	33.3	38	70				
	156	43.3	30	73				
150-80	112	31.1	83	69	1480	55	4	900
	160	44.4	80	81				
	208	57.8	72	80				
150-80A	98	27.2	73	68	1480	45	4	765
	140	38.9	70	79				
	182	50.6	64	77				
150-80B	84	23.3	64	66	1480	37	4	660
	120	33.3	60	75				
	156	43.3	54	72				
150-12.5(I)	140	38.89	33.8	70	1480	15	3	270
	200	55.56	32	78				
	260	72.22	28	73				
150-12.5(I)A	125	34.72	11	66	1480	11	3	250
	179	49.72	10	76				
	233	64.72	8.5	76				
150-20(I)	140	38.89	21.8	73	1480	18.5	3	310
	200	55.56	20	79				
	260	72.22	17	77				
150-20(I)A	129	35.8	18.5	72	1480	15	3	270
	184	51.1	17	78				
	240	66.7	14.4	76				
150-20(I)B	117	32.5	15.2	71	1480	11	3	250
	167	46.4	14	76				
	217	60.3	12	74				
150-32(I)	140	38.89	33.8	70	1480	30	3	415
	200	55.56	32	78				
	260	72.22	28	73				
150-32(I)A	131	36.39	29.5	69	1480	22	3.5	340
	187	51.94	28	77				
	243	67.5	24.5	78				
150-32(I)B	121	33.61	25	69	1480	18.5	3.5	315
	173	48.06	24	76				

	225	62.5	21	77				
150-50(I)	140	38.89	53	68	1480	45	3.5	505
	200	55.56	50	75				
	260	72.22	44	71				
150-50(I)A	131	36.39	46.6	67	1480	37	3.5	465
	187	51.94	44	74				
	243	67.5	38.3	70				
150-50(I)B	122	33.89	40.5	66	1480	30	3.5	440
	174	48.33	38	73				
	226.5	62.93	33	69				
150-50(I)C	112	31.11	34	64	1480	22	3.5	375
	160	44.44	32	71				
	208	57.78	28	67				
150-80(I)	140	38.89	13.8	68	1480	90	4	1080
	200	55.56	12.5	78				
	260	72.22	10.6	78				
150-80(I)A	131	36.39	29.5	69	1480	75	4	905
	187	51.94	28	77				
	243	67.5	24.5	78				
150-80(I)B	122	33.89	65	60	1480	55	4	785
	174	48.33	62	66				
	226.5	62.93	58	64				
150-80(I)C	112	31.11	34	64	1480	45	4	655
	160	44.44	32	71				
	208	57.78	28	67				
150-80	120	33.3	87	65	2960	75	4.2	715
	200	55.6	80	76				
	240	66.7	72	74				
150-80A	112	31.1	76	64	2960	55	4.2	565
	187	51.9	70	75				
	224	62.2	63	75				
150-80B	104	28.9	65	63	2960	45	4.2	470
	173	48.1	60	74				
	208	57.8	54	72				
150-125	120	33.3	133	58	2960	110	4.5	985
	200	55.6	125	73				
	240	66.7	120	75				
150-125A	112	31.1	116	57	2960	90	4.5	810
	187	51.9	110	72				
	224	62.2	1058	74				
150-125B	104	28.9	100	55	2960	75	4.5	730
	173	48.1	95	70				
	208	57.8	91	72				

Type	Capacity		Head (m)	Efficiency (%)	Speed (r/min)	Motor Power (kg)	NPSH	Weight (kg)
	(m ³ /h)	(L/S)						
200/185-15/4	196	54.4	10.3	67	1480	15	4	346
	280	77.8	10	77				
	336	93.3	8.5	76				
200/200-18.5/4	210	58.3	13.4	69	1480	18.5	4	380
	300	83.3	12.5	79				
	360	100	10.5	78				
200/220-15/4	182	50.6	14.6	70	1480	15	4	346
	262	72.8	13	75				
	312	86.7	9	73				
200/235-18.5/4	196	54.4	18	72	1480	18.5	4	380
	280	77.8	16	78				
	336	93.3	11.2	73				
200/250-30/4	210	58.3	22.5	74	1480	30	4	475
	300	83.3	20	79				
	360	100	14	74				
200/285-30/4	182	50.6	27	69	1480	30	4	505
	262	72.2	24	76				
	312	86.7	19.5	74				
200/300-37/4	196	54.4	31.5	69	1480	37	4	560
	280	77.8	28	77				
	336	93.3	23	73				
200/315-45/4	210	58.3	36	70	1480	45	4	600
	300	83.3	32	78				
	360	100	26	73				
200/320-37/4	171	47.5	34.9	67	1480	37	4	600
	245	68.1	32	74				
	294	81.7	25	70				
200/345-45/4	182	50.6	41.4	68	1480	45	4	600
	262	72.8	38	75				
	312	86.7	29.6	71				
200/370-55/4	196	54.4	48	70	1480	55	4	705
	280	77.8	44	76				
	336	93.3	34	73				
200/400-75/4	210	58.3	54.5	71	1480	75	4	850
	300	83.3	50	78				
	360	100	39	74				
200/440-75/4	182	50.6	64	74	1480	75	4.5	815
	262	72.8	60	78				
	312	86.7	54	69				

200/475-90/4	196 280 336	54.4 77.8 93.3	74 70 64	75 79 70	1480	90	4.5	905
200/510-110/4	210 300 360	58.3 83.3 100	85 80 73	73 80 75	1480	110	4.5	1230
200/185-18.5/4	250 358 465	69.44 99.44 129.17	10.7 10 8.5	68 78 77	1480	18.5	4	366
200/200-22/4	280 400 520	77.78 111.11 144.44	13.4 12.5 10.5	70 80 79	1480	22	4	385
200/220-18.5/4	226 322 419	62.78 89.44 116.39	15.5 14 10	70 75 73	1480	18.5	4	390
200/235-22/4	250 358 465	69.44 99.44 129.17	19 17 13	73 78 70	1480	22	4	421
200/250-30/4	280 400 520	77.78 111.11 144.44	22.2 20 14	75 80 72	1480	30	4	476
200/285-37/4	242 346 450	67.22 96.11 125	27.5 24 18.5	71 78 73	1480	37	4	532
200/300-45/4	262 374 486	72.78 103.89 135	31.5 28 23	72 79 74	1480	45	4	560
200/315-55/4	280 400 520	77.78 111.11 144.44	36 32 26	73 80 75	1480	55	4	680
200/320-45/4	224 320 416	62.22 88.89 115.56	34.9 32 25	71 78 73	1480	45	4	585
200/345-55/4	242 346 450	67.22 96.11 125	42 38 29.6	72 79 74	1480	55	4	692
200/370-75/4	262 374 486	72.78 103.89 135	48 44 35	73 80 75	1480	75	4	835
200/400-75/4	280 400 520	77.78 111.11 144.44	54.5 50 39	75 81 77	1480	75	4	835
200/410-75/4	224	62.22	62	70	1480	75	4	1050

	320	88.89	56	76				
	416	115.56	48	74				
200/440-90/4	242	67.22	65	71	1480	90	4	1292
	346	96.11	60	78				
	450	125	54	75				
200/475-110/4	262	72.78	76	72	1480	110	4	1415
	374	103.89	70	79				
	486	135	63	76				
200/510-132/4	280	77.78	87	73	1480	132	4	1565
	400	111.11	80	80				
	520	144.44	71	77				
200/225-75/2	224	62.22	62	71	2960	75	4	810
	320	88.89	56	78				
	416	115.56	48	73				
200/250-110/2	256	71.11	76	72	2960	110	4	1210
	352	97.78	70	79				
	448	124.44	59	74				
200/270-132/2	280	77.78	85	73	2960	132	4	1350
	400	111.11	80	80				
	520	144.44	69	75				
200/285-132/2	224	62.22	104	73	2960	132	4.5	1350
	320	88.89	96	77				
	416	115.56	72	75				
200/310-200/2	256	71.11	120	74	2960	200	4.5	1450
	352	97.78	112	78				
	448	124.44	88	76				
200/330-220/2	280	77.78	135	75	2960	220	4.5	1540
	400	111.11	125	79				
	520	144.44	104	77				
250/335-37/4	365	101.4	19	76	1480	37	5	550
	500	138.9	17	80				
	600	166.7	14	80				
250/250-45/4	400	111.1	2.2	78	1480	45	5	600
	550	152.8	20	82				
	670	186.1	15	81				
250/285-45/4	325	90.3	25	74	1480	45	5	685
	450	125	24	78				
	530	147.2	20	79				
250/300-55/4	365	101.4	31.5	76	1480	55	5	830
	500	138.9	28	80				
	600	166.7	23	82				
250/315-75/4	400	111.1	36	77	1480	75	5	905
	550	152.8	32	82				

	670	186.1	26	84				
250/345-75/4	325	90.3	41.2	73	1480	75	5	905
	450	125	38	76				
	530	147.2	34.2	78				
250/370-90/4	365	101.4	47	74	1480	90	5	1050
	500	138.9	44	77				
	600	166.7	35	79				
250/400-110/4	400	111.1	54.5	75	1480	110	5	1550
	550	152.8	50	78				
	670	186.1	39	80				
250/390-90/4	325	90.3	55	73	1480	90	5	1050
	450	125	50	74				
	530	147.2	42	74				
250/435-132/4	365	101.4	65	74	1480	132	5	1350
	500	138.9	60	75				
	600	166.7	54	77				
250/480-160/4	400	111.1	76	75	1480	160	5	1540
	550	152.8	70	76				
	670	186.1	63	78				
250/410-110/4	311	86.5	58	69	1480	110	5	1350
	428	119	55	71				
	514	142.8	48.5	70				
250/440-132/4	339	94	66.5	70	1480	132	5	1420
	466	129.3	63.5	73				
	559	155.2	55.5	72				
250/475-160/4	368	102.2	75	72	1480	160	5	1560
	506	140.6	71	75				
	607	168.7	62.5	74				
250/510-200/4	400	111.1	84	73	1480	200	5	1750
	550	152.8	80	77				
	670	186.1	70	75				
300/195-37/4	422	117.2	16.1	76	1480	37	5	645
	609	169.2	14	79				
	760	211.1	11.2	80				
300/215-45/4	460	127.8	20.2	78	1480	45	5	785
	657	182.5	17.5	81				
	791	219.7	14.2	82				
300/250-55/4	500	138.9	23	80	1480	55	5	900
	720	200	20	83				
	900	250	16	84				
300/260-55/4	415	115.3	23	75	1480	55	5	1170
	623	173.1	21	79				
	779	216.4	18.5	75				

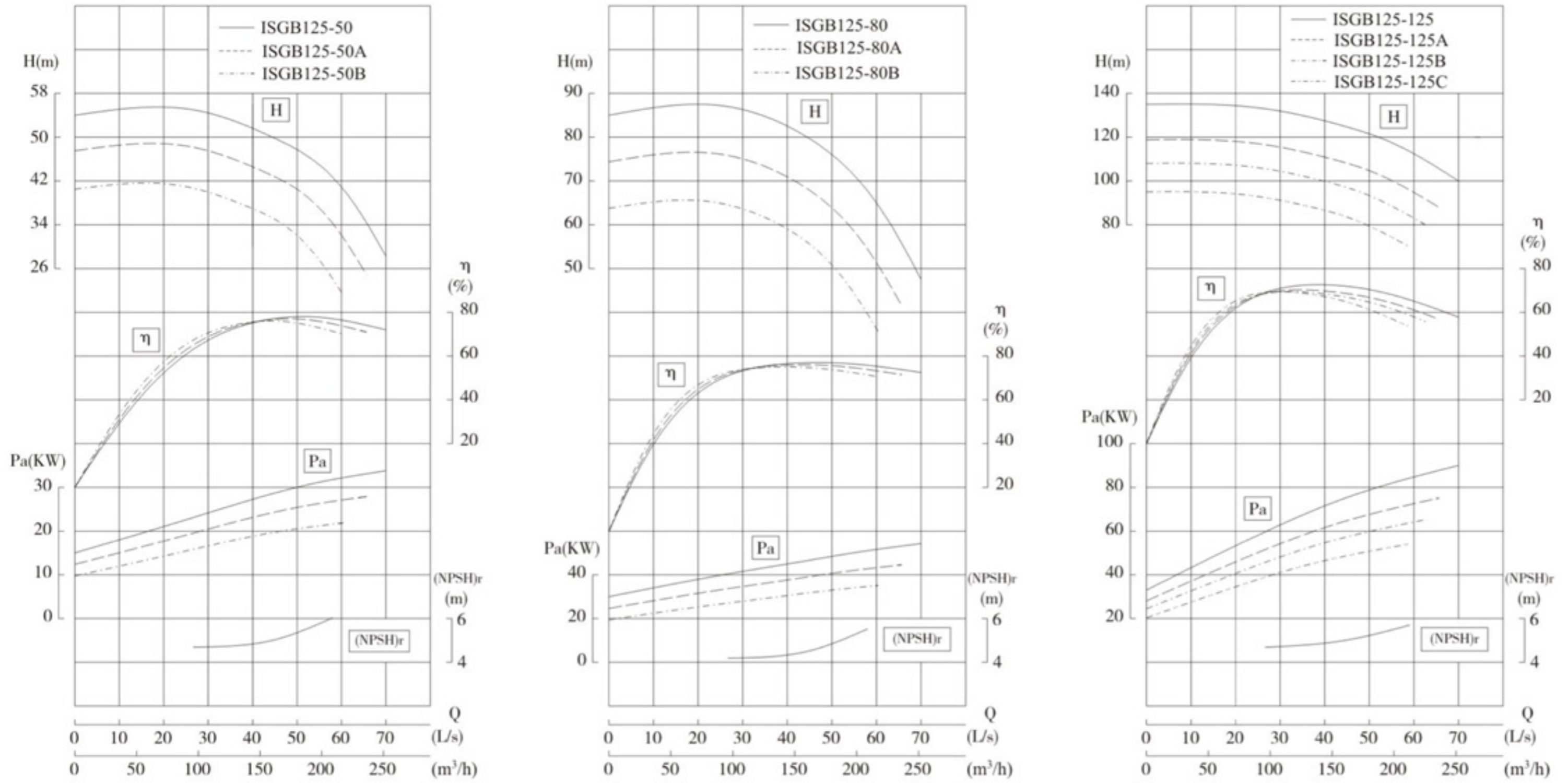
300/280-75/4	444 666 833	123.3 185 231.4	26.5 24 21.5	76 80 76	1480	75	5	1350
300/300-75/4	480 720 900	133.3 200 250	31 28 25	77 81 77	1480	75	5	1350
300/270-55/4	423 609 728	117.5 169.2 202.2	25.5 23.5 20	72 78 73	1480	55	5	1080
300/295-75/4	460 662 791	127.8 183.9 219.7	30.5 28 23.5	74 80 74	1480	75	5	1250
300/315-90/4	500 720 900	138.9 200 250	36 32 26	79 82.5 84	1480	90	5	1350
300/325-90/4	409 614 767	113.6 170.6 213.1	35 32 25	72 80 78	1480	90	5	1550
300/360-110/4	444 666 833	123.3 185 231.4	41.4 38 30	73 81 79	1480	110	5	1700
300/380-132/4	480 720 900	133.3 200 250	48 44 34	76 84 82	1480	132	5	1900
300/310-75/4	389 561 670	108.1 155.8 186.1	35.5 33 27.5	69 74 72	1480	75	5.5	1250
300/345-90/4	423 609 728	117.5 169.2 202.2	41 38 32	72 77 75	1480	90	5.5	1400
300/370-110/4	460 662 791	127.8 183.9 219.7	47 44 36.5	74 79 77	1480	110	5.5	1520
300/400-132/4	500 720 900	138.9 200 250	54.5 50 42	75 80 78	1480	132	5.5	1725
300/355-90/4	389 561 670	108.1 155.8 186.1	42 38 30	72 78 79	1480	90	5.5	1500
300/375-110/4	423 609 728	117.5 169.2 202.2	49 45 35	73 79 80	1480	110	5.5	1630
300/425-160/4	460	127.8	60	74	1480	160	5.5	1730

	662	183.9	55	80				
	791	219.7	49	81				
300/460-200/4	500	138.9	71	75	1480	200	5.5	2150
	720	200	65	81				
	900	250	58	82				
300/415-132/4	389	108.1	57	68	1480	132	5.5	1850
	561	155.8	54.5	75				
	670	186.1	49	70				
300/440-160/4	423	117.5	65	71	1480	160	5.5	1980
	609	169.2	62	77				
	728	202.2	56	72				
300/470-200/4	460	127.8	74	73	1480	200	5.5	2150
	662	183.9	70.5	79				
	791	219.7	63.5	74				
300/510-250/4	500	138.9	84	74	1480	250	5.5	2280
	720	200	80	80				
	900	250	72	75				
350/300-75/4	900	250	19	73	1480	75	5.5	1350
	1080	300	17	78				
	1300	361.1	14	74				
350/315-110/4	1000	277.8	23	76	1480	110	5.5	1580
	1200	333.3	20	80				
	1450	402.8	16	76				
350/345-110/4	745	206.9	27	71	1480	110	6	1650
	985	273.6	25	75				
	1182	328.3	20	72				
350/370-132/4	900	250	31.5	72	1480	132	6	1720
	1080	300	28	76				
	1300	361.1	23	73				
350/400-160/4	1000	277.8	36	74	1480	160	6	1870
	1200	333.3	32	78				
	1450	402.8	26	75				
350/355-132/4	678	188.3	37	63	1480	132	6	1860
	900	250	34	67				
	1080	300	29.5	65				
350/385-160/4	745	206.9	42	60	1480	160	6	2000
	985	273.6	38.5	70				
	1182	328.3	34	68				
350/425-200/4	900	250	47.5	68	1480	200	6	2100
	1080	300	44	72				
	1300	361.1	38	70				
400-12.5	1200	333.3	14	78	980	75	6	1750
	1600	444.4	12.5	84				

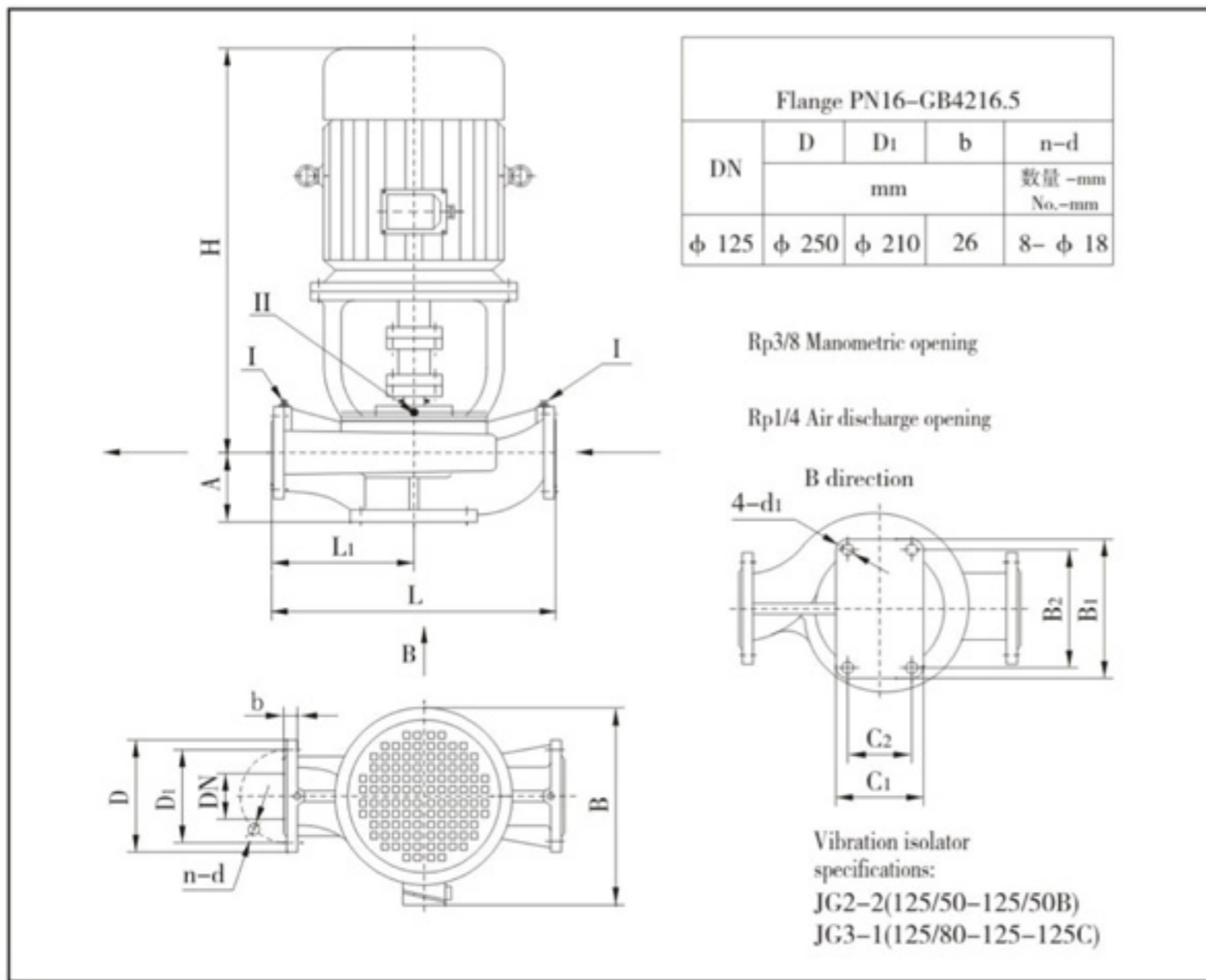
	1900	527.8	10.5	81				
400-12.5A	1092	303.3	12	78	980	55	6	1480
	1456	404.4	10.5	83				
	1729	480.3	9	80				
400-20	1200	333.3	23	81	980	110	6	1950
	1600	444.4	20	85				
	1900	527.8	15	74				
400-20A	1092	303.3	19.5	80	980	90	6	1880
	1456	404.4	17	84				
	1729	480.3	13	73				
400-32	1200	333.3	35	80	980	200	6	2550
	1600	444.4	32	85				
	1900	527.8	26	78				
400-32A	1092	303.3	30	79	980	160	6	2420
	1456	404.4	27.5	84				
	1729	480.3	22.5	77				
400-32B	994	276	26	77	980	132	6	2250
	1325	368	23.5	82				
	1573	437	19	75				



Performance curve



Assembly dimensions figure



Assembly dimensions table

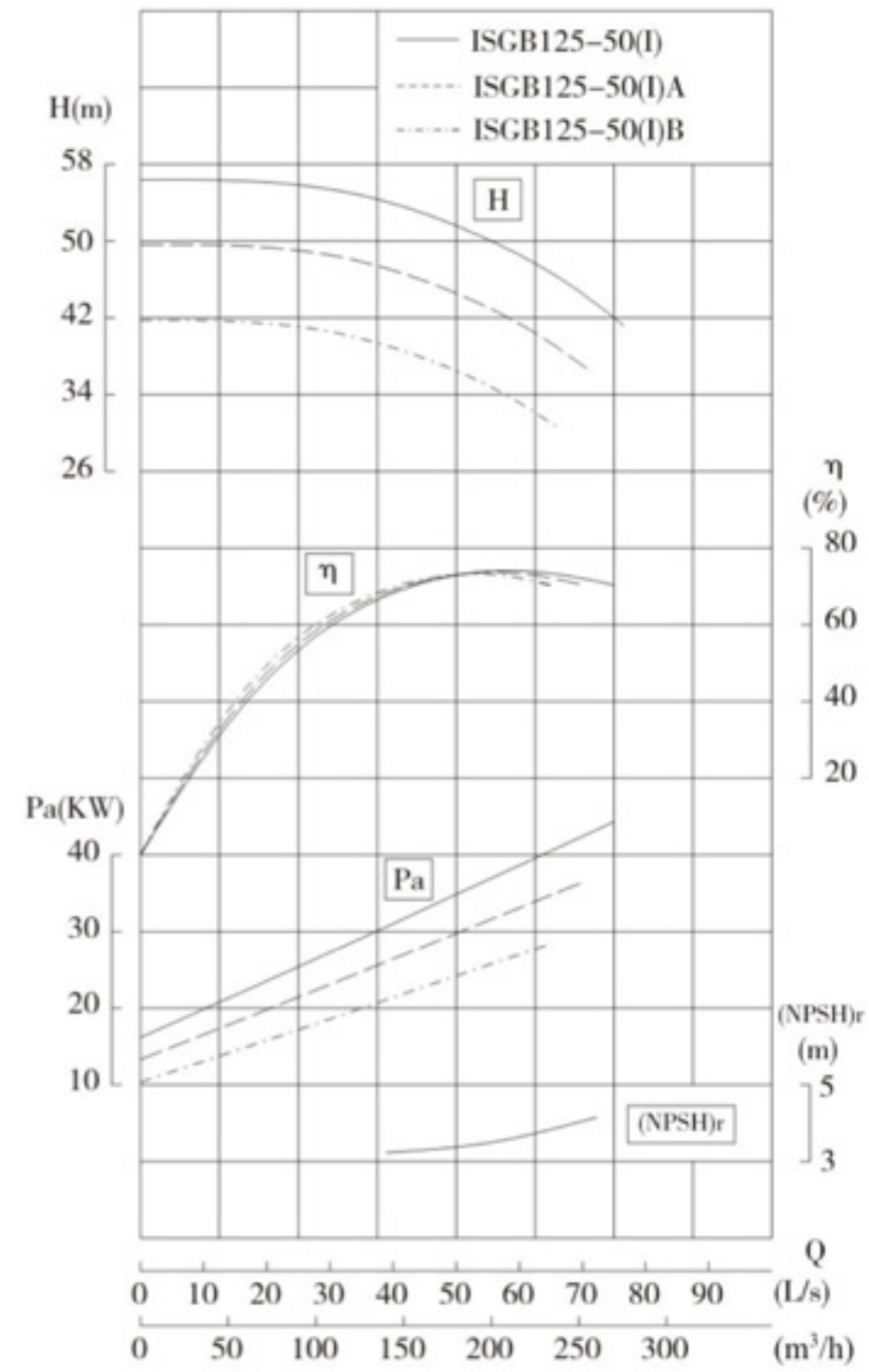
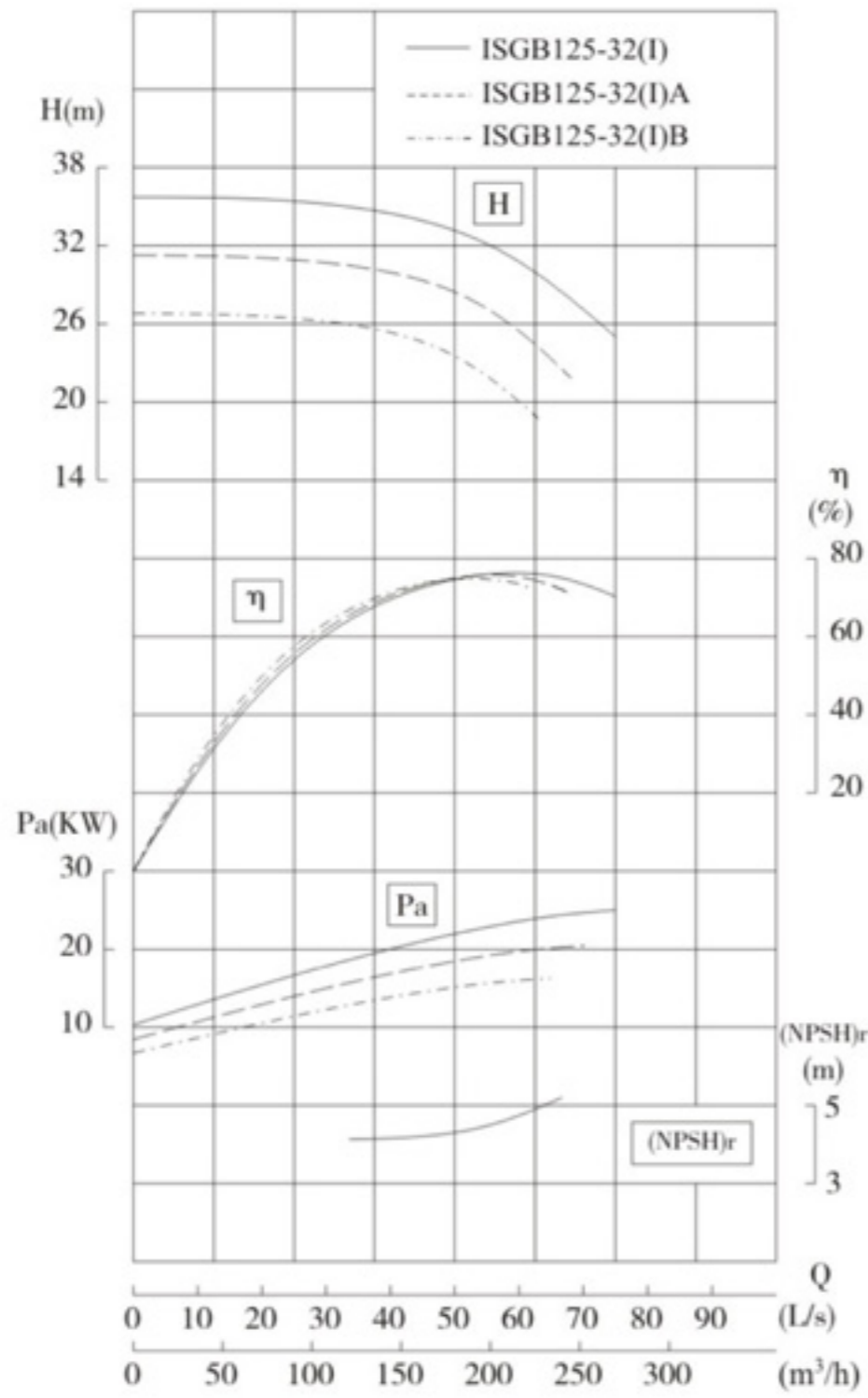
Type	DN	L	L ₁	H	B	A	C ₁ × B ₁	C ₂ × B ₂	4-d ₁
mm									
125-50	φ 125	620	300	1125	575	185	260 × 310	210 × 260	4-φ 23
125-50A	φ 125	620	300	1125	575	185	260 × 310	210 × 260	4-φ 23
125-50B	φ 125	620	300	1020	530	185	260 × 310	210 × 260	4-φ 18
125-80	φ 125	650	310	1280	680	195	310 × 360	250 × 300	4-φ 23
125-80A	φ 125	650	310	1195	625	195	310 × 360	250 × 300	4-φ 23
125-80B	φ 125	650	310	1195	575	195	310 × 360	250 × 300	4-φ 23
125-125	φ 125	700	350	1395	720	195	360 × 460	300 × 400	4-φ 23
125-125A	φ 125	700	350	1335	720	195	360 × 460	300 × 400	4-φ 23
125-125B	φ 125	700	350	1335	720	195	360 × 460	300 × 400	4-φ 23
125-125C	φ 125	700	350	1260	720	195	360 × 460	300 × 400	4-φ 23

Performance data table

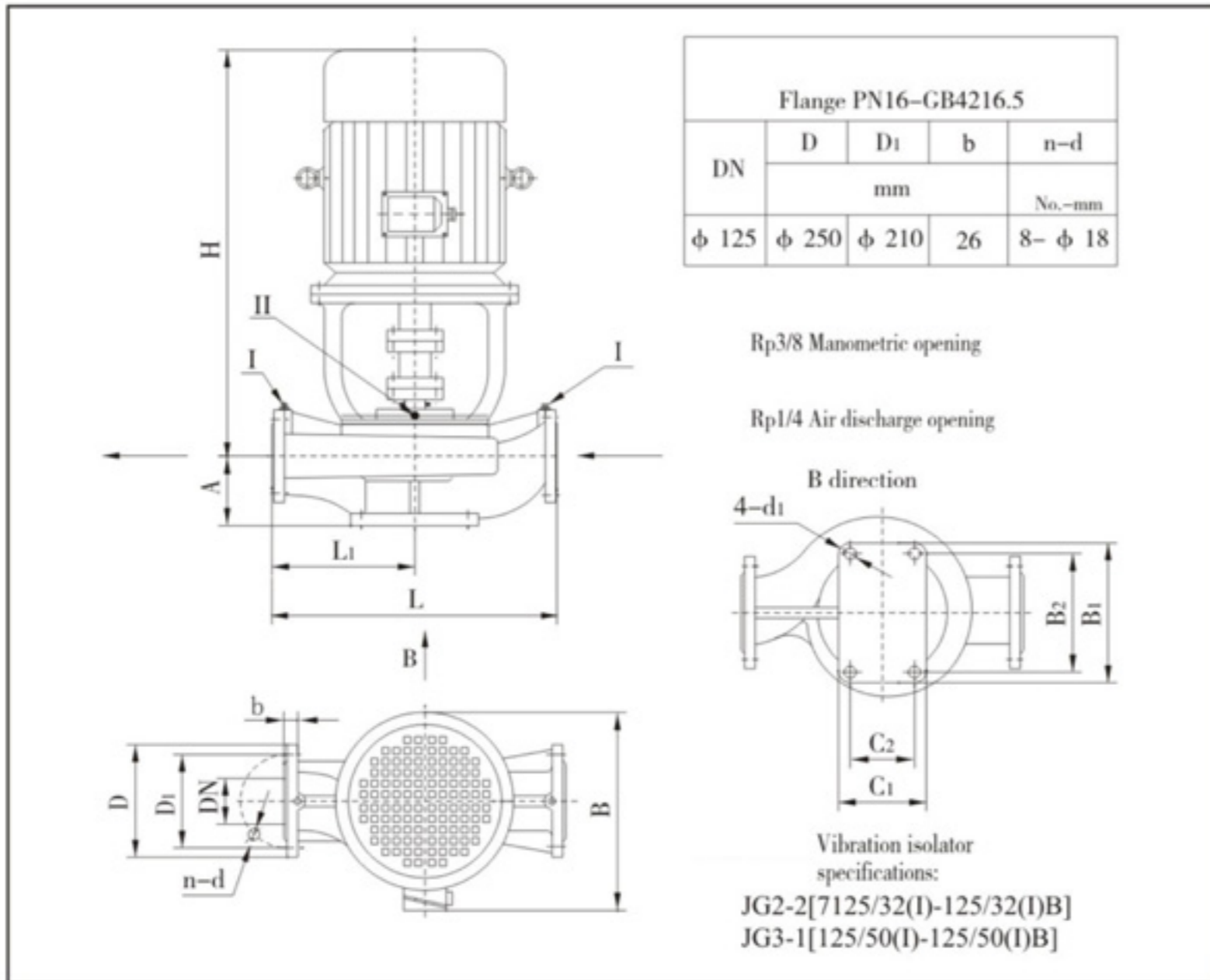
Type	Capacity Q		Head H (m)	Efficiency η (%)	Speed n (r/min)	Motor Power (KW)	(NPSH) _r (m)	Weight (kg)
	(m³/h)	(L/s)						
125-50	96	26.7	55	72	2960	37	5.0	405
	160	44.4	50	77				
	192	53.3	46	78				
125-50A	90	25.0	48.4	71	2960	30	5.0	385
	150	41.7	44.0	76				
	180	50	40.5	78				
125-50B	83	23.1	41.3	70	2960	22	5.0	330
	138	38.3	37.5	75				
	166	46.1	34.5	77				
125-80	96	26.7	87	71	2960	55	4.5	580
	160	44.4	80	75				
	192	53.3	73	77				
125-80A	90	25.0	76	70	2960	45	4.5	500
	150	41.7	70	74				
	180	50	64	76				
125-80B	83	23.1	65	69	2960	37	4.5	435
	138	38.3	60	73				
	166	46.1	55	75				
125-125	96	26.7	133	69	2960	90	4.5	800
	160	44.4	125	72				
	192	53.3	119	68				
125-125A	90	25.0	117	65	2960	75	4.5	715
	150	41.7	110	70				
	180	50	104.6	67				
125-125B	86	23.9	106.4	65	2960	75	4.5	710
	143	39.7	100	69				
	172	47.8	95.2	66				
125-125C	80.5	22.4	96	64	2960	55	4.5	590
	134	37.2	88	68				
	161	44.7	86	65				



Performance curve



Assembly dimensions figure



Performance data table

Type	Capacity Q		Head H (m)	Efficiency η (%)	Speed n (r/min)	Motor Power (KW)	(NPSH)r (m)	Weight (kg)
	(m³/h)	(L/s)						
125-32(I)	120	33.3	35	64	2960	30	4.5	330
	200	55.6	32	76				
	240	66.7	28	75				
125-32(I)A	112	31.1	31.5	63	2960	22	4.5	300
	187	51.9	28	75				
	224	62.2	24	75				
125-32(I)B	104	28.9	26.2	62	2960	18.5	4.5	285
	173	48.1	24	74				
	208	57.8	21	74				
125-50(I)	120	33.3	55	63	2960	45	4.5	445
	200	55.6	50	74				
	240	66.7	46	73				
125-50(I)A	112	31.1	48.4	62	2960	37	4.5	425
	187	51.9	44	73				
	224	62.2	40	73				
125-50(I)B	104	28.9	41	61	2960	30	4.5	415
	173	48.1	37	72				
	208	57.8	34.5	73				

Assembly dimensions table

Type	DN	mm							
		L	L1	H	B	A	C1×B1	C2×B2	4-d1
125-32(I)	φ 125	580	280	1135	560	185	260×310	210×260	4-φ 23
125-32(I)A	φ 125	580	280	1030	530	185	260×310	210×260	4-φ 23
125-32(I)B	φ 125	580	280	995	485	185	260×310	210×260	4-φ 23
125-50(I)	φ 125	620	300	1165	650	185	260×310	210×260	4-φ 23
125-50(I)A	φ 125	620	300	1125	575	185	260×310	210×260	4-φ 23
125-50(I)B	φ 125	620	300	1125	575	185	260×310	210×260	4-φ 23